



The Association of Environmental Enterprises

Katri Penttinen
Managing Director





The Association of Environmental Enterprises

- is an industrial life organization and “the voice” of entrepreneurs and companies in the environmental field
- is a member of the Chemical Industry Federation of Finland, which is a member of the Confederation of Finnish Industries EK

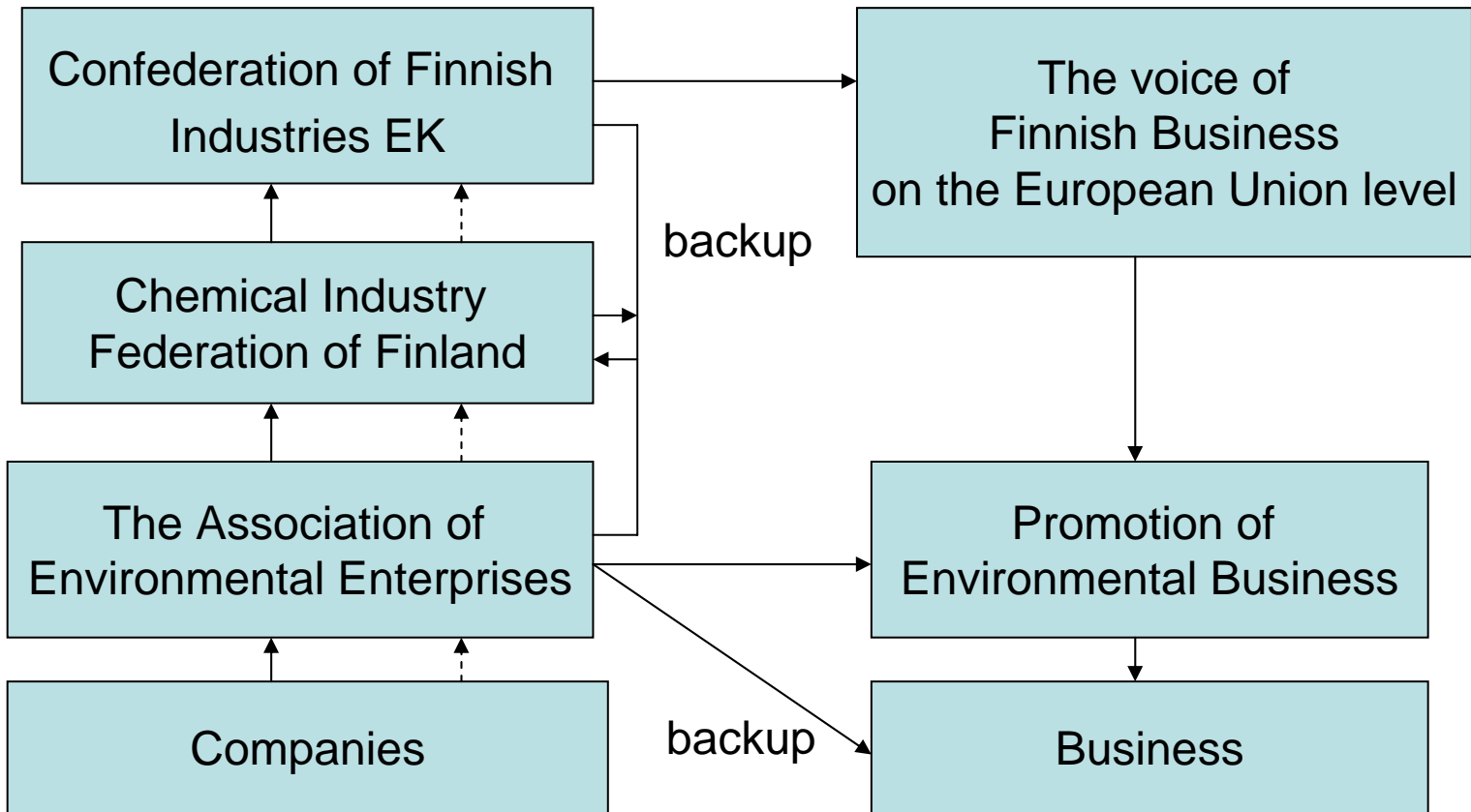


YYL promotes the business of its members

- acts in different organizations, committees and working groups in the preparatory work of legislation
- makes suggestions, proposes and issues expert opinions in the environmental field
- protects professional, social and financial interests of its members.



The Operating Environment in Business





The Association of Environmental Enterprises

- was established in 1995, when five smaller environmental associations established together a new association > YYL
- board of directors
 - Chairman, Managing Director Mika Laine, Envor Group Oy
 - Vice-chairman Osmo Bolander, Lassila & Tikanoja Oyj
- 102 member companies of different branches of environmental management, eg. Lassila & Tikanoja Oyj, SITA Finland Oy Ab, Ekokem Oy Ab, Lohja Rudus, Envor Group Oy, Puzair Oy
- Members of YYL are committed to strict ethical principles



Business Idea

- Association of Environmental Enterprises (YYL) promotes the possibilities of its member companies to carry out environmental business that is based on market economy and sustainable development.





Key messages

Competence creates successful companies

- to promote recycling and save resources
- to be innovative and develop new technology

Open economy and successful entrepreneurship

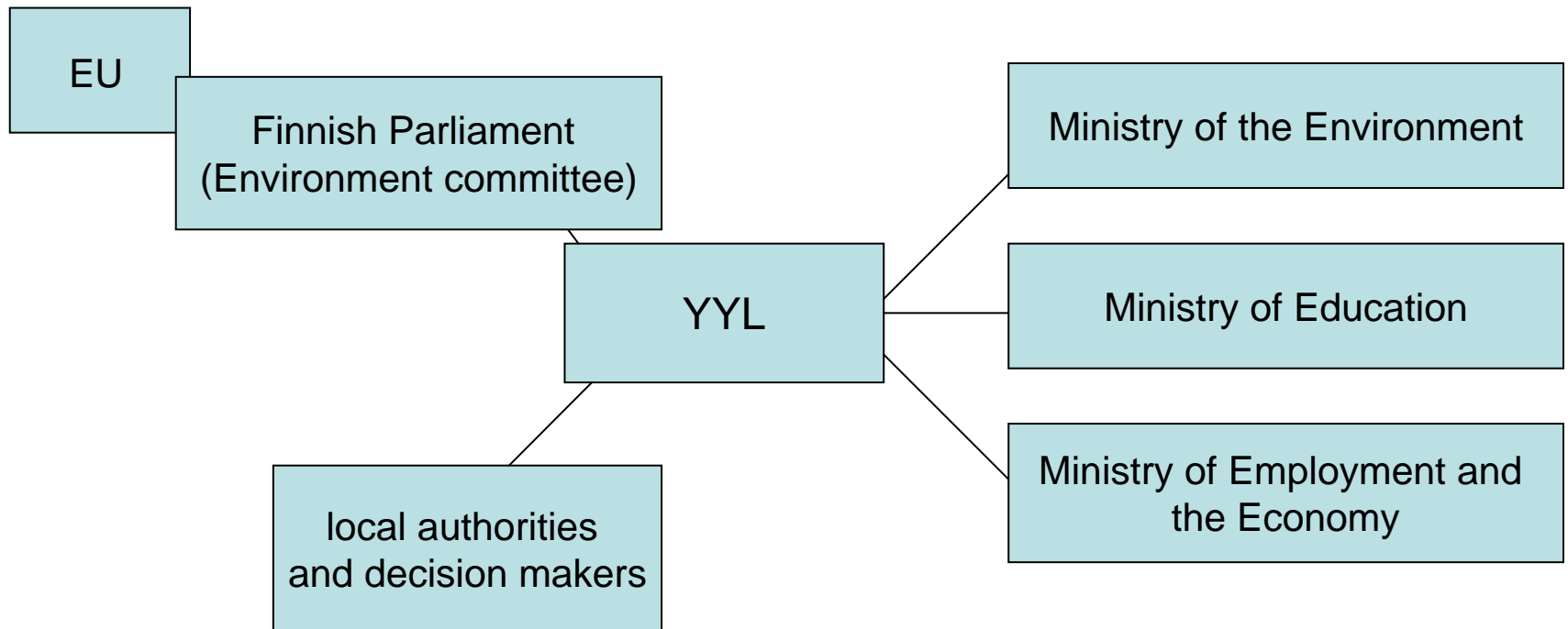
Code of ethics and accountability in business

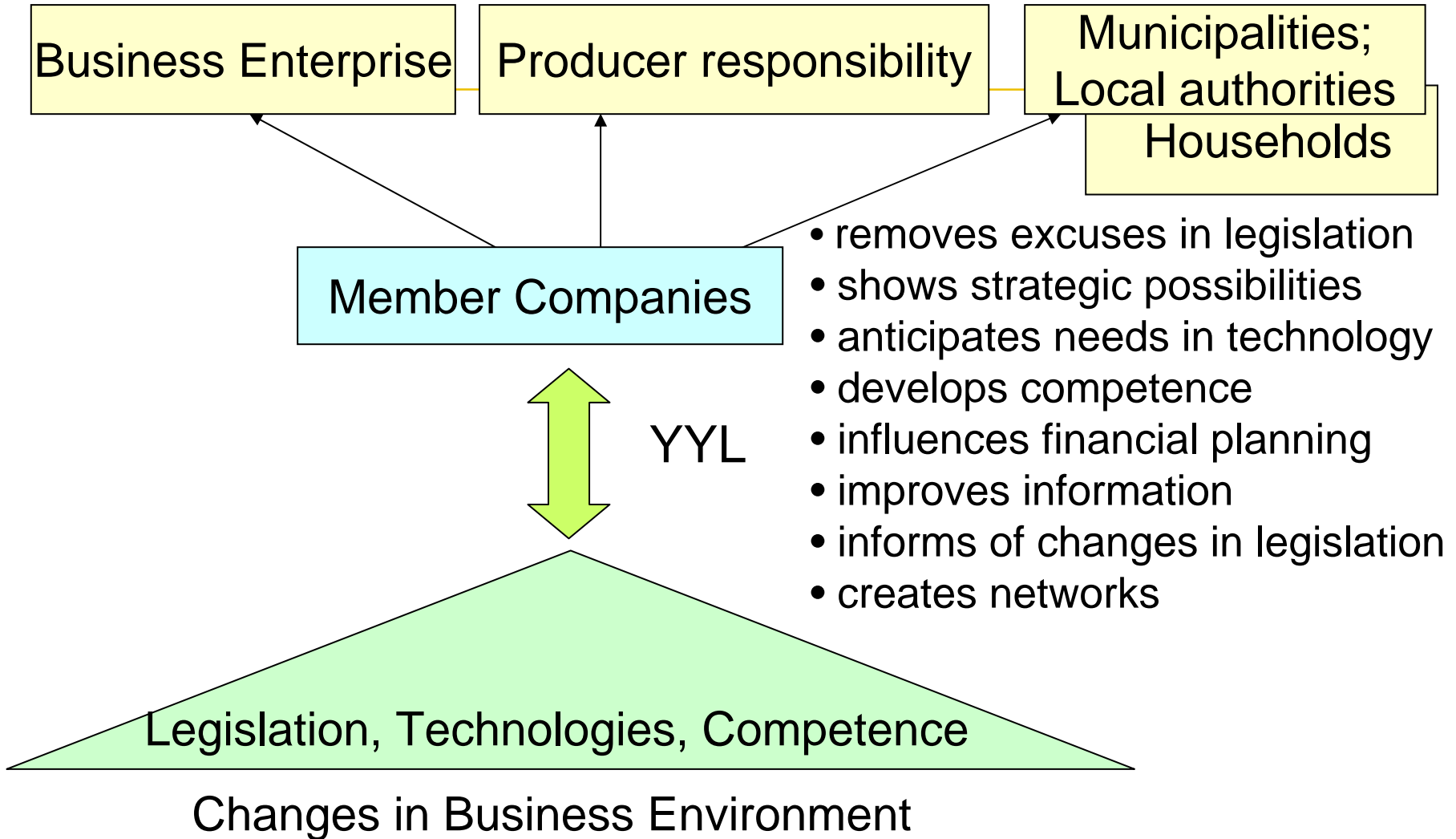




Network

- YYL works in close connection with the Finnish Parliament, the Finnish ministries and local authorities







YYL takes part in waste legislation work

- Member of the Finnish Waste legislation renewal work group (started in 2007, completed in 2010)
- Member of the work group for the National Waste Plan (work completed in 2007)
- Participation in different work groups for the Regional Waste Plans (work starts in 2008)
- Participation in the work group for Producer Responsibility (work completed in 2005)



Vocational Education in Waste Management

- YYL is a member of the National Board of Education work group, which develops vocational training and skills demonstrations in the field of Waste and Waste Water Management
- YYL is a shareholder in Top Institute, which manages SYKLI Environmental School of Finland, and takes part in different SYKLI work groups developing courses and on-the-job learning systems in Waste and Waste Water Management





YYL connects companies and interest groups

- provides information for different interest groups
- provides information, counseling and services for its members
- acts effectively and anticipates the changes in the operating environment
- acts professionally and reliably to promote the business of its members.



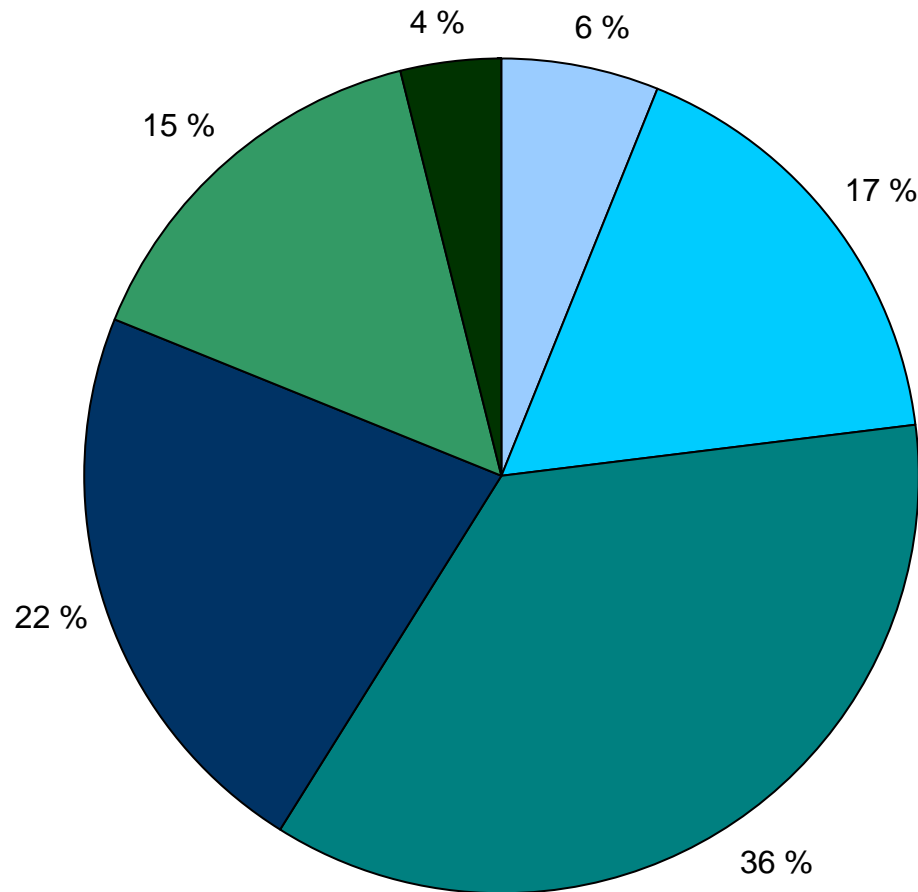


YYL members operate in several business areas

- Resource recovery and treatment
- Secondary raw materials
- Environmental technology
- Energy recovery
- Metal recycling
- Sewage & technical cleansing
- Environmental logistics
- Hazardous waste



The turnover of YYL member companies



Members represent over 80 % of annual turnover of field





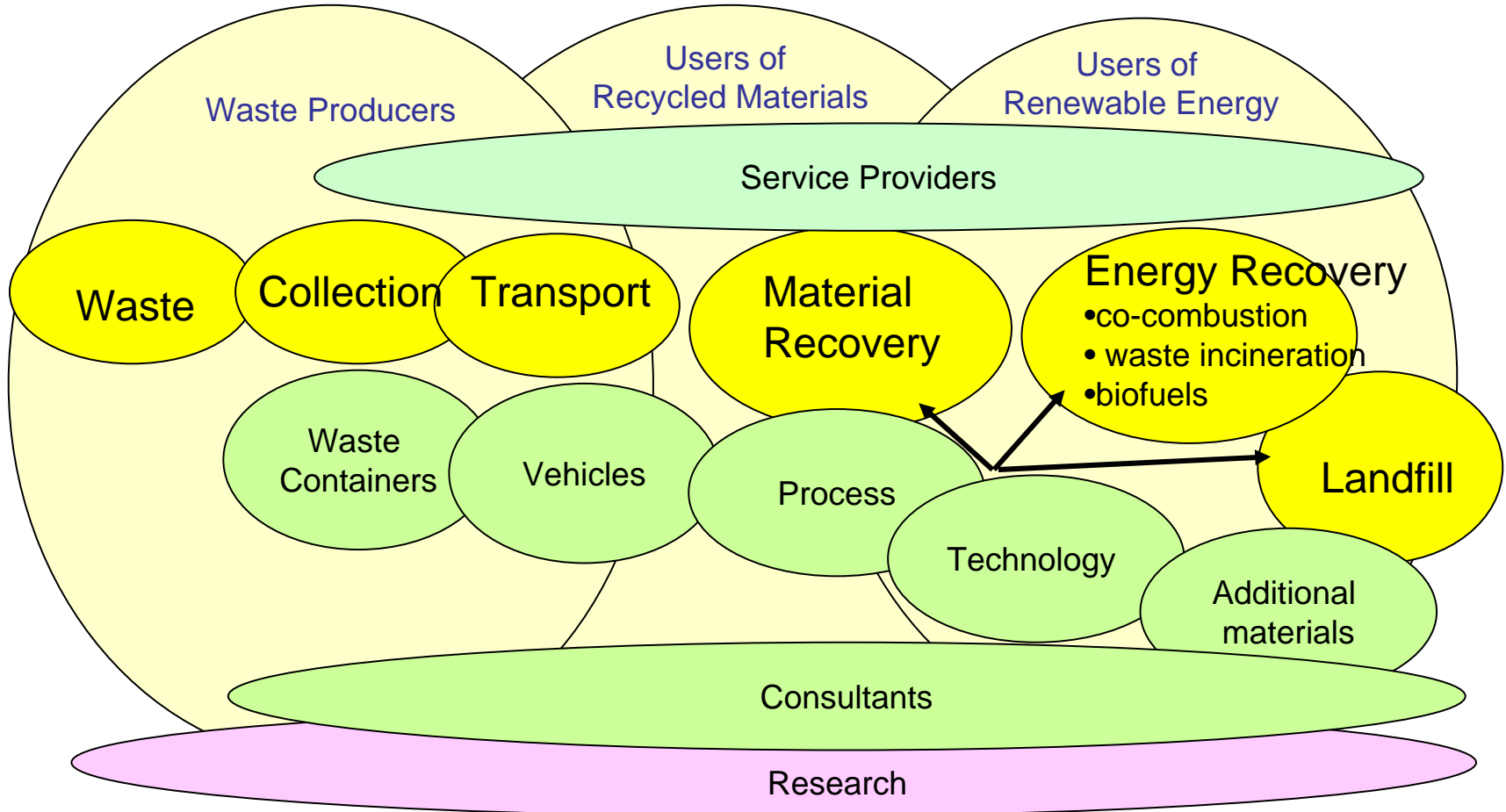
Environmental Business in Finland

- Environmental Technology
 - approx. 4 billion euros, 800 companies
- Waste Management
 - 1,1 billion euros (incl. metal recycling)
- YYL members
 - 550 million euros
- Municipal Waste Management companies
 - 200 million euros



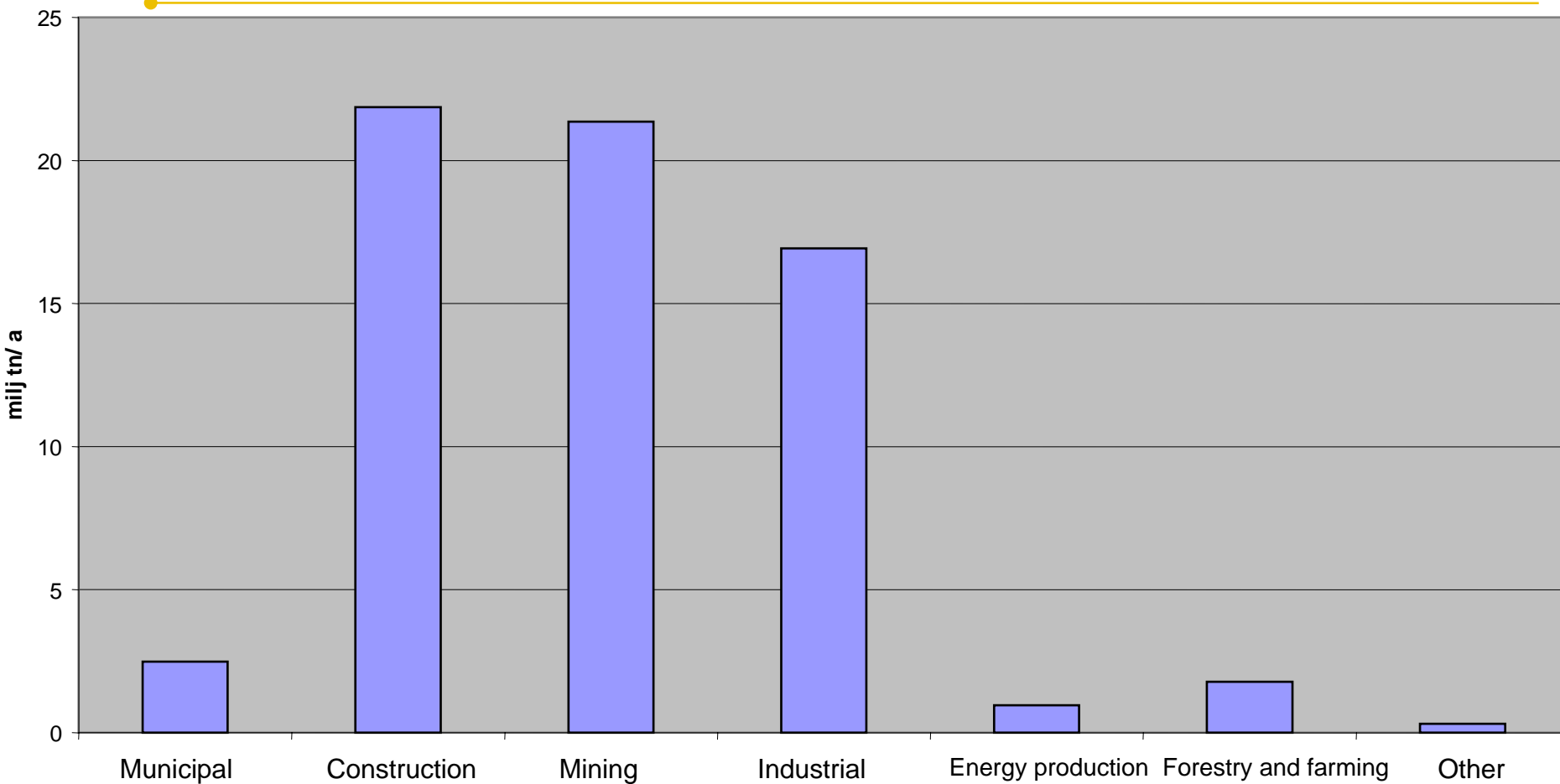


The Value Chain in Waste Management





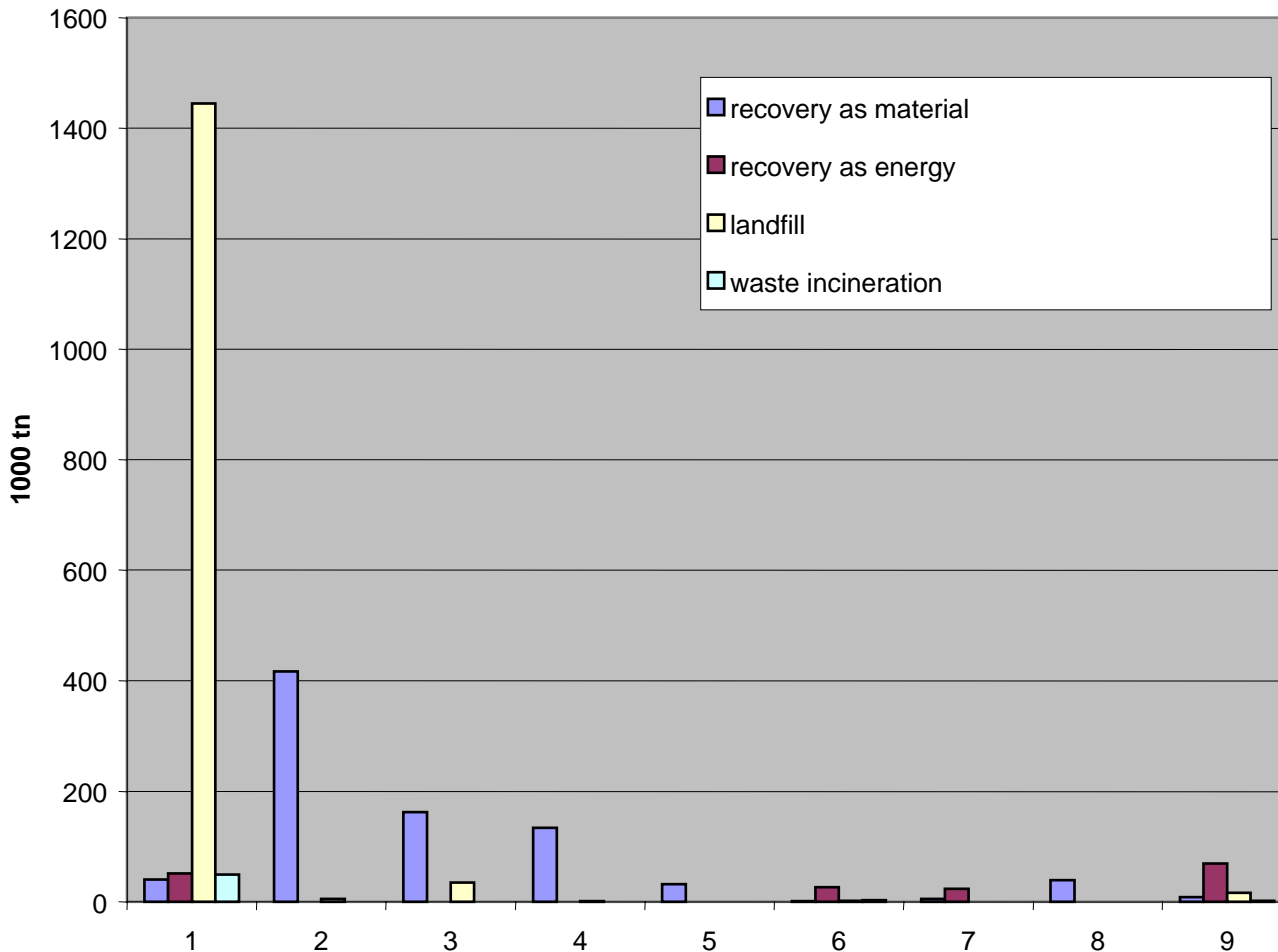
Waste in Finland 2005 approx 66 million tonnes





Municipal Waste in 2006, 1000 tn

source: Statistic Finland



1 = mixed waste

2 = paper and cardboard

3 = biowaste

4 = glass

5 = metals

6 = wood

7 = plastics

8 = WEEE

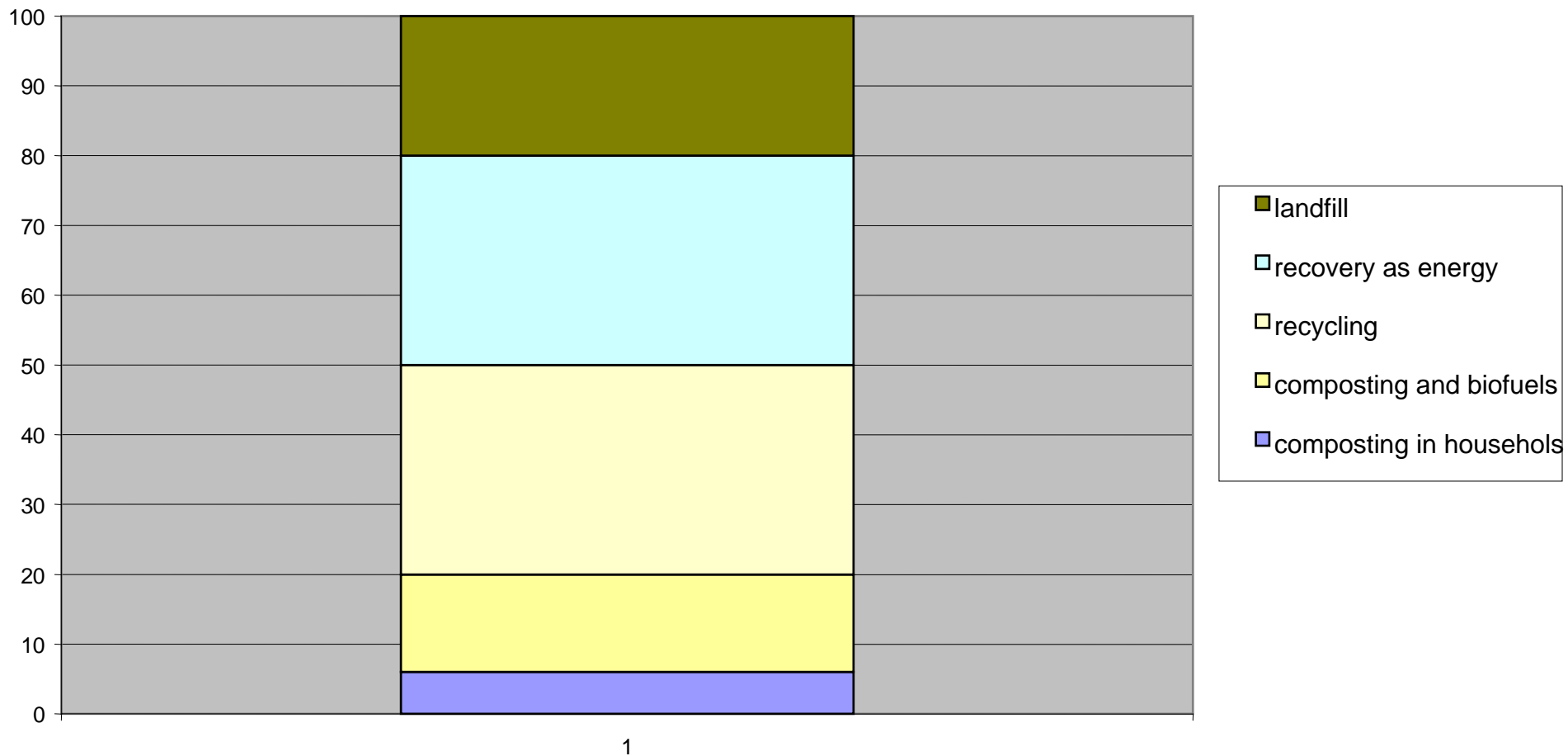
9 = other, unspecified

Municipal Waste

2,566 billion tonnes



Municipal Waste Treatment, scenario in 2016 (2,5 milj tn)





The Association of Environmental Enterprises

Address:

Eteläranta 10, (P.O.Box 4),
00130 Helsinki, Finland
www.ymparistoyritykset.fi

Managing Director Ms. Katri Penttinen
+358 9 1728 4339, +358 40 560 0330
katri.penttinen@chemind.fi

Environmental Expert Ms. Pia Vilenius
+358 9 1728 4338, +358 40 413 6340
pia.vilenius@chemind.fi

